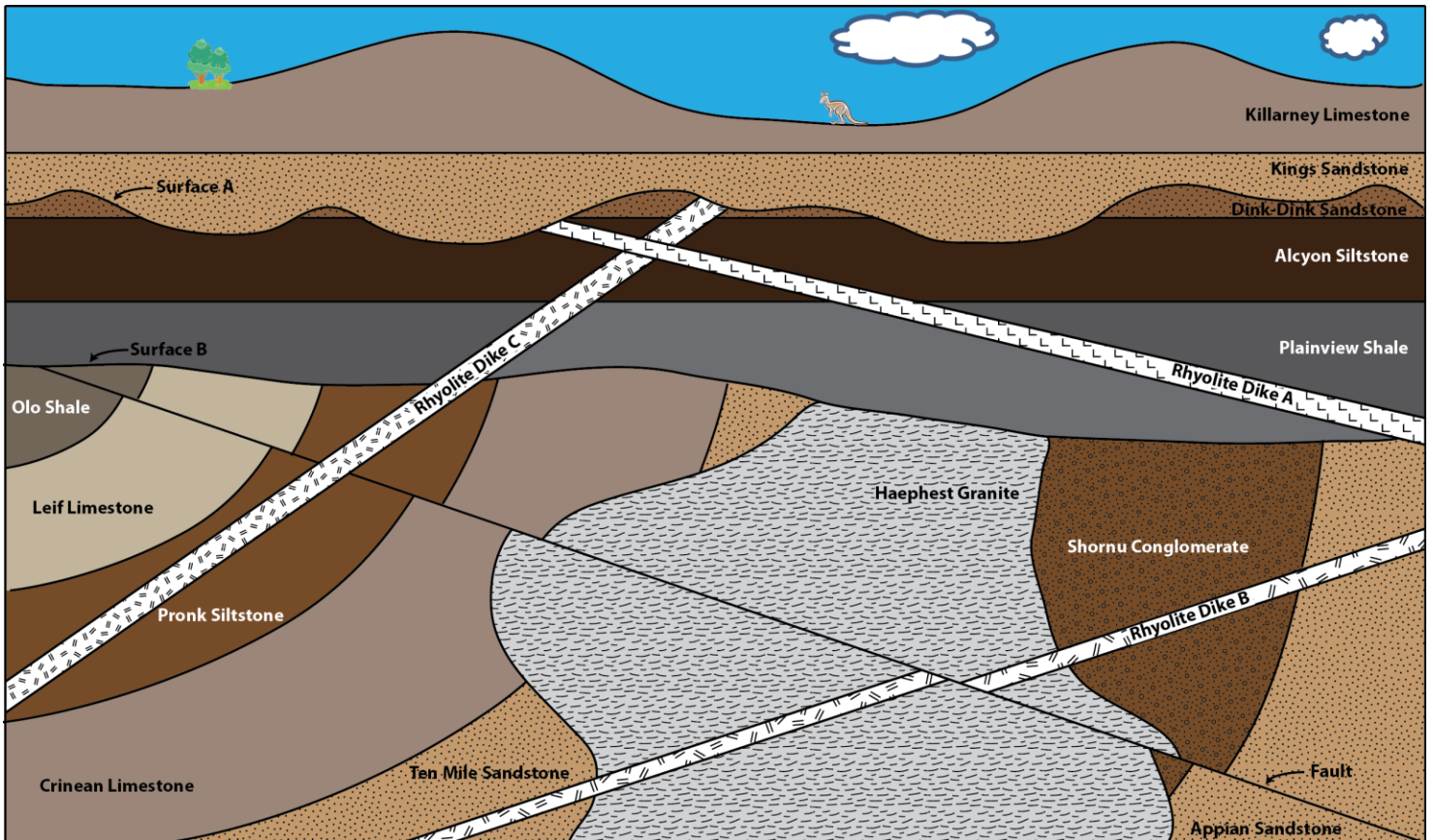


# ACTIVITY – RELATIVE DATING



Note: Granite and rhyolite are igneous rocks. Limestone, sandstone, siltstone, and shale are all sedimentary.

- 1) Which is younger (more recent), the fault or Rhyolite Dike B?
- 2) What is Surface B?
- 3) Which is younger, the Haephest Granite or Rhyolite Dike B?
- 4) Which is younger, the Leif Limestone or the Dink-Dink Sandstone?
- 5) Which is younger, the Dink-Dink Sandstone or the Plainview Shale?
- 6) Has the Pronk Siltstone undergone ductile deformation, brittle deformation, or both?
- 7) Which is younger, Rhyolite Dike A or the Killarney Limestone? How do you know?

- 8) Which is younger, Rhyolite Dike A or the Haephast Granite?
- 9) Radiometric dating indicates that the Haephast Granite is 85 million years old, and Rhyolite Dike A is 30 million years old.
- a. What can you say about the age of Rhyolite Dike C?
  
  - b. What can you say about the age of the Kings Sandstone?
- 10) Place the following in order of oldest to youngest: Rhyolite Dike C, Plainview Shale, Crinean Limestone, Haephast Granite.